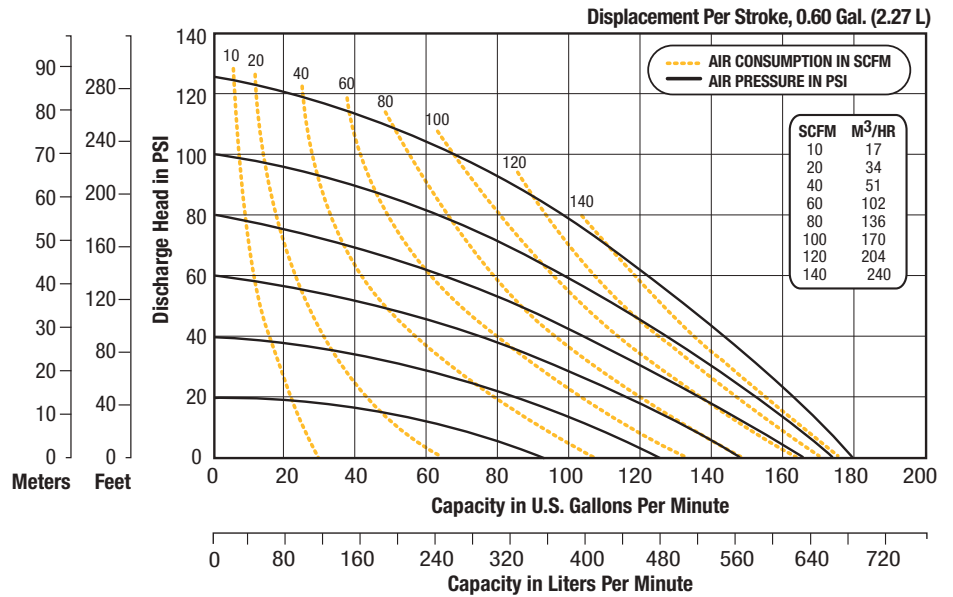


## SANITARY PUMPS

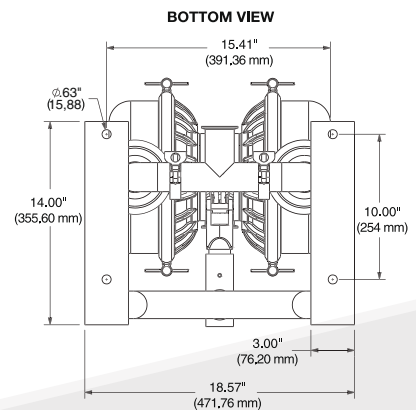
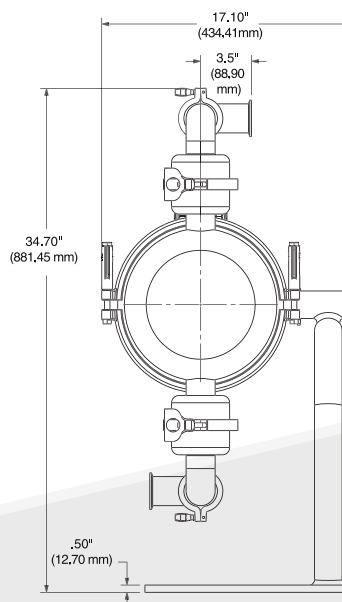
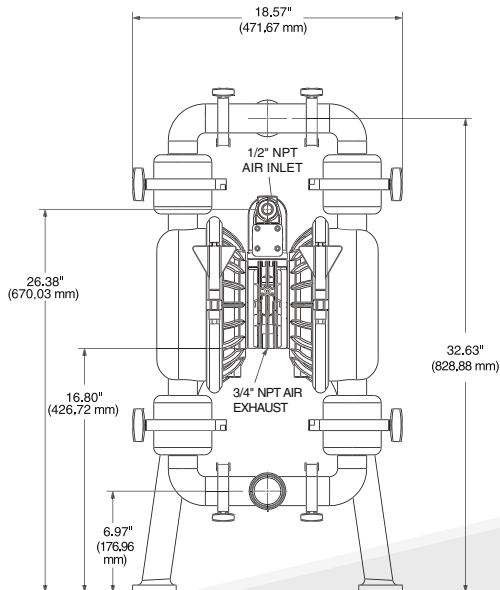
### SPSN20SSS – 2"



## Technical Specifications

**Max Flow** ..... 179 GPM (677 LPM)  
**Max Air Supply or Liquid Pressure** .... 100 psig (6,9 bar)  
**Max Particle Size (Dia.)** ..... 5/8" (15,9 mm)  
**Suction Lift** ..... 15' Dry / 32' Wet (4,6 m / 9,8 m)  
**Temperature Range** ... -40° F (-40° C) to 275° F (134° C)  
**Elastomers** ..... Santoprene  
**Center Block** ..... SS316  
**Wetted Section** ..... SS316L-Polished to 32 Ra

**Port Configuration** ..... Center Horizontal  
**Intake / Discharge Connection** ..... 2" Tri-Clamp®  
**Air Inlet / Exhaust** ..... 1/2" NPT / 1" NPT  
**Noise Level** ..... 98 db (A)  
**Shipping Weight** ..... 125 lbs (56.7 kg)  
**Wet End Kit Part Number** ..... 200-160  
**Air Valve Kit Part Number** ..... 200-004



**STANDARD**  
*Pumps Inc.*  
[www.standardpump.com](http://www.standardpump.com)