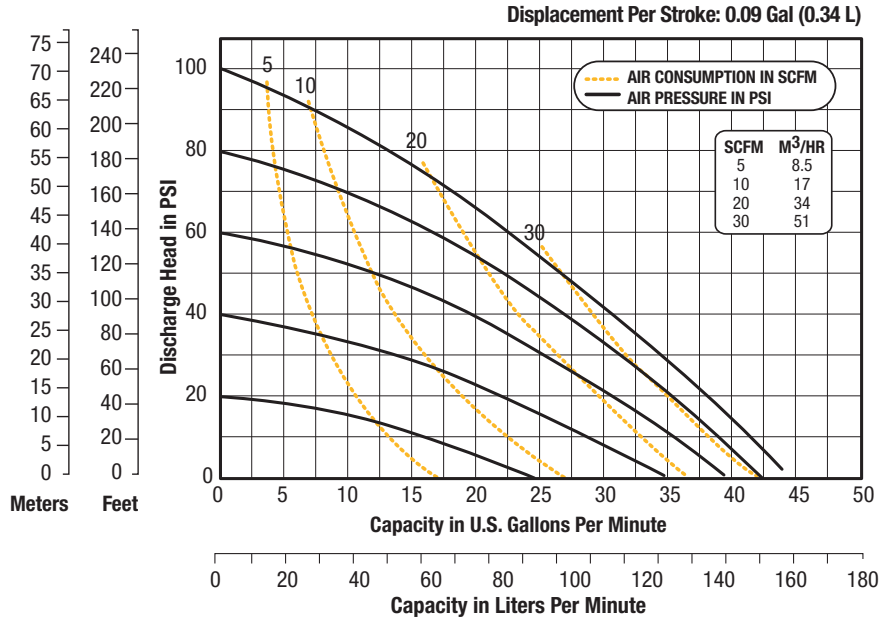
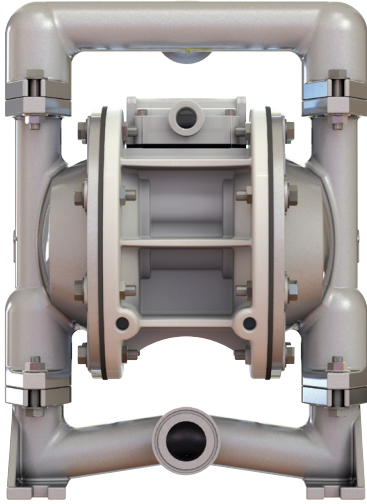


FDA COMPLIANT PUMPS

SPFP10PPS – 1"



Technical Specifications

Max Flow 46 GPM (174,1 LPM)
Max Air Supply or Liquid Pressure . . . 100 psig (6,9 bar)
Max Particle Size (Dia.) 1/8" (3,17 mm)
Suction Lift 16' Dry / 31' Wet (4,9 m / 9,4 m)
Temperature Range . . . -40° F (-40° C) to 275° F (134° C)
Elastomers Santoprene
Center Block Polypropylene
Wetted Section SS316

Port Configuration Center Horizontal
Intake / Discharge Connection 1/2" Tri-Clamp®
Air Inlet / Exhaust 3/8" NPT / 1/2" NPT
Noise Level 93 db (A)
Shipping Weight 36 lbs (16,3 kg)
Wet End Kit Part Number 200-040
Air Valve Kit Part Number 200-002

