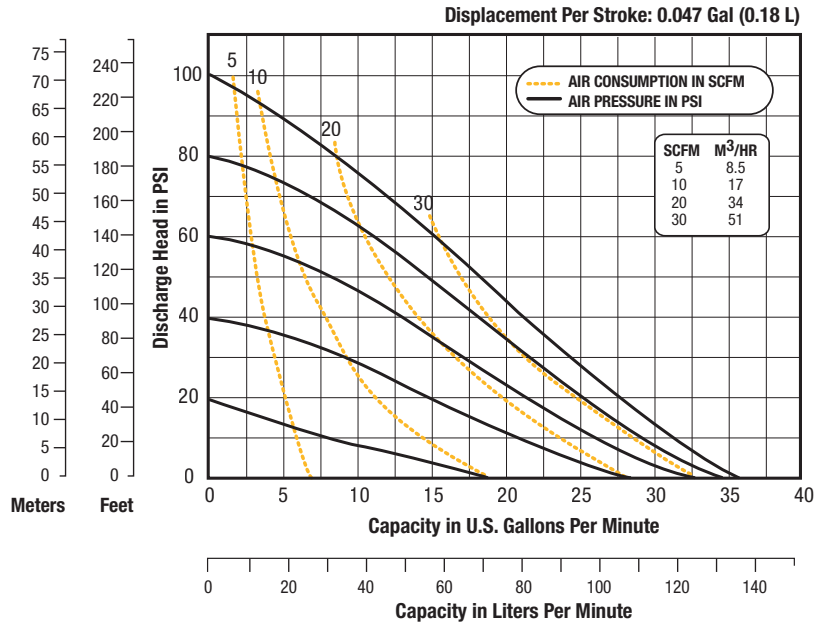
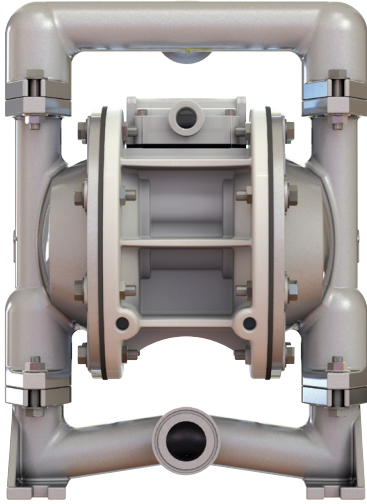


## FDA COMPLIANT PUMPS

### SPFP10PPT – 1"



## Technical Specifications

**Max Flow** ..... 36 GPM (136,3 LPM)  
**Max Air Supply or Liquid Pressure** ... 100 psig (6,9 bar)  
**Max Particle Size (Dia.)** ..... 1/8" (3,17 mm)  
**Suction Lift** ..... 11' Dry / 31' Wet (3,4 m / 9,4 m)  
**Temperature Range** ... -35° F (-37° C) to 220° F (104° C)  
**Elastomers** ..... PTFE  
**Center Block** ..... Polypropylene  
**Wetted Section** ..... SS316

**Port Configuration** ..... Center Horizontal  
**Intake / Discharge Connection** ..... 1 1/2" Tri-Clamp®  
**Air Inlet / Exhaust** ..... 3/8" NPT / 1/2" NPT  
**Noise Level** ..... 96 db (A)  
**Shipping Weight** ..... 36 lbs (16,3 kg)  
**Wet End Kit Part Number** ..... 200-030  
**Air Valve Kit Part Number** ..... 200-002

