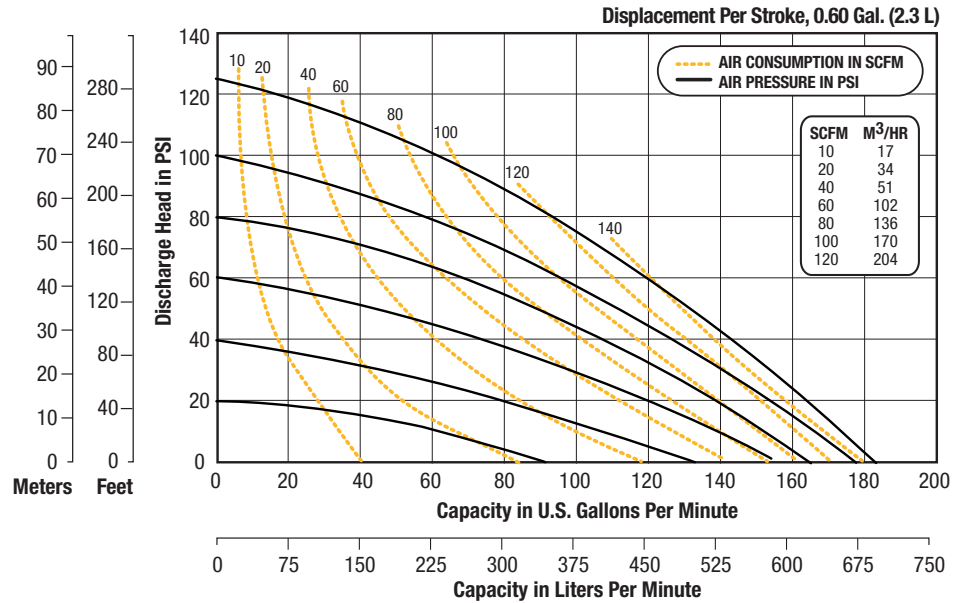
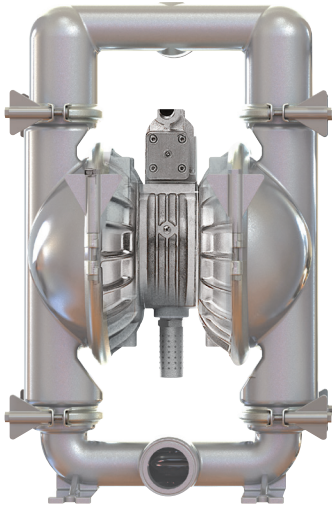


## FDA COMPLIANT PUMPS

### SPFP20SSS – 2"



## Technical Specifications

**Max Flow** ..... 185 GPM (700 LPM)  
**Max Air Supply or Liquid Pressure** ... 125 psig (8,6 bar)  
**Max Particle Size (Dia.)** ..... 1/4" (6,35 mm)  
**Suction Lift** ..... 17' Dry / 32' Wet (5,1 m / 9,5 m)  
**Temperature Range** ... -40° F (-40° C) to 275° F (134° C)  
**Elastomers** ..... Santoprene  
**Center Block** ..... SS316  
**Wetted Section** ..... SS316

**Port Configuration** ..... Center Horizontal  
**Intake / Discharge Connection** ..... 2 1/2" Tri-Clamp®  
**Air Inlet / Exhaust** ..... 1/2" NPT / 1" NPT  
**Noise Level** ..... 96 db (A)  
**Shipping Weight** ..... 106 lbs (48,1 kg)  
**Wet End Kit Part Number** ..... 200-080  
**Air Valve Kit Part Number** ..... 200-008

