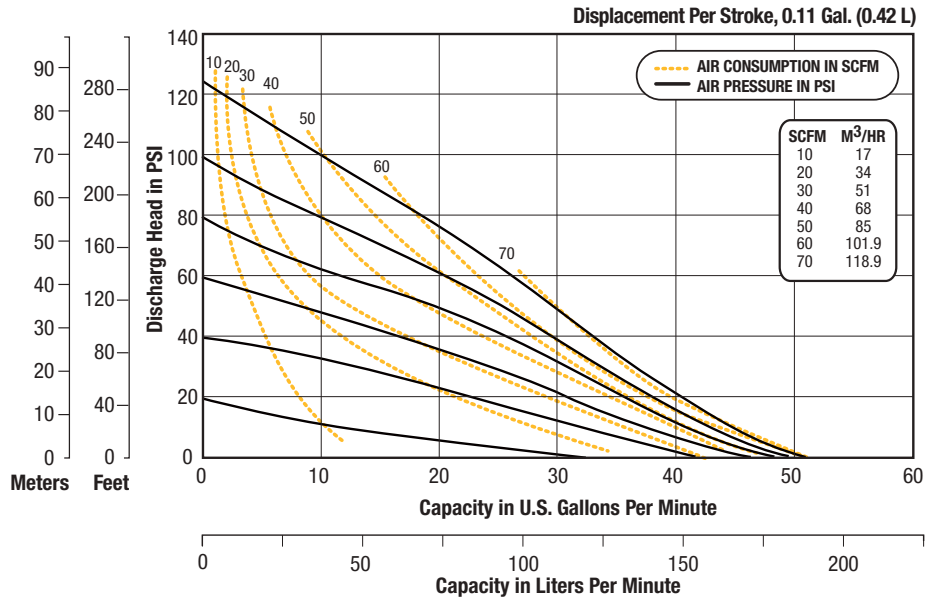


## SANITARY PUMPS

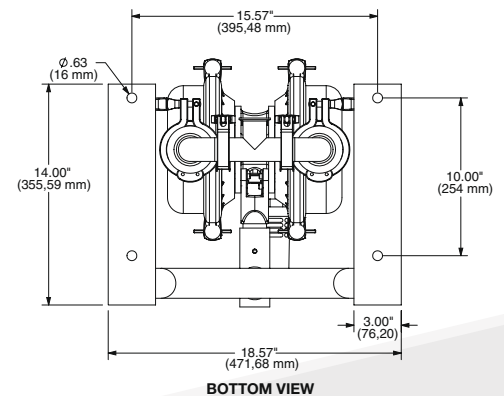
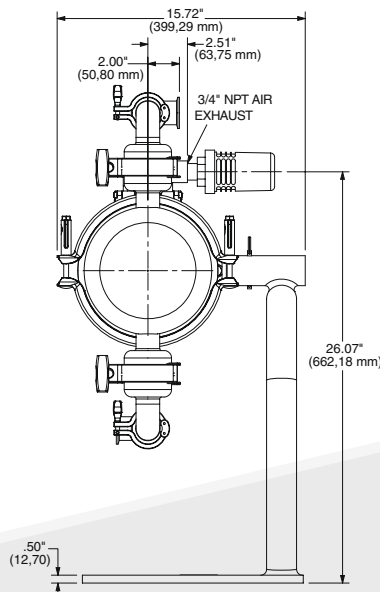
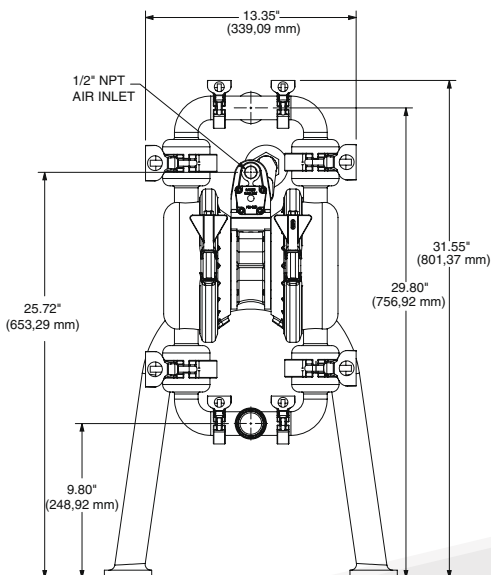
### SPSN15NPT – 1½"



### Technical Specifications

**Max Flow** ..... 51 GPM (193 LPM)  
**Max Air Supply or Liquid Pressure** .... 100 psig (6,9 bar)  
**Max Particle Size (Dia.)** ..... 3/8" (9,5 mm)  
**Suction Lift** ..... 15' Dry / 25' Wet (6,10 m / 7,62 m)  
**Temperature Range** ... -35° F (-37° C) to 220° F (104° C)  
**Elastomers** ..... PTFE  
**Center Block** ..... Nickel Plated Aluminum  
**Wetted Section** ..... SS316L-Polished to 32 Ra

**Port Configuration** ..... Center Horizontal  
**Intake / Discharge Connection** ..... 1½" Tri-Clamp®  
**Air Inlet / Exhaust** ..... ½" NPT / ¾" NPT  
**Noise Level** ..... 101 db (A)  
**Shipping Weight** ..... 75 lbs (34 kg)  
**Wet End Kit Part Number** ..... 200-110  
**Air Valve Kit Part Number** ..... 200-003



**STANDARD**  
Pumps, Inc.

[www.standardpump.com](http://www.standardpump.com)