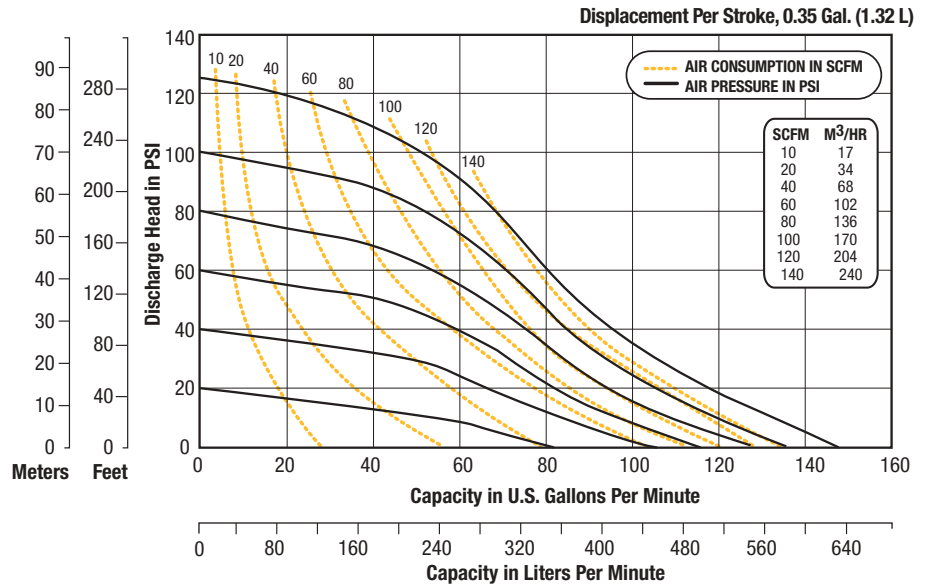


SANITARY PUMPS

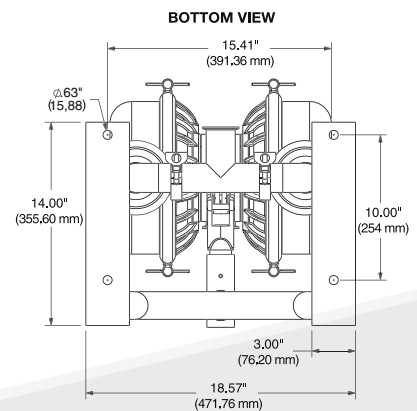
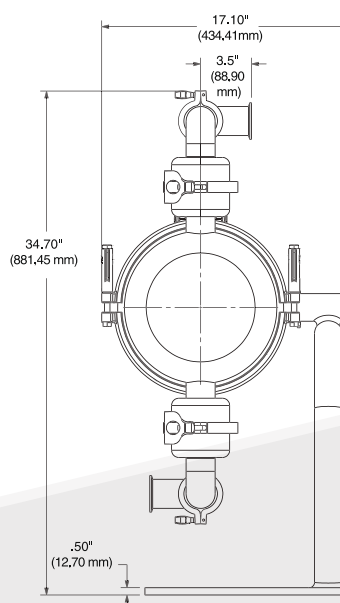
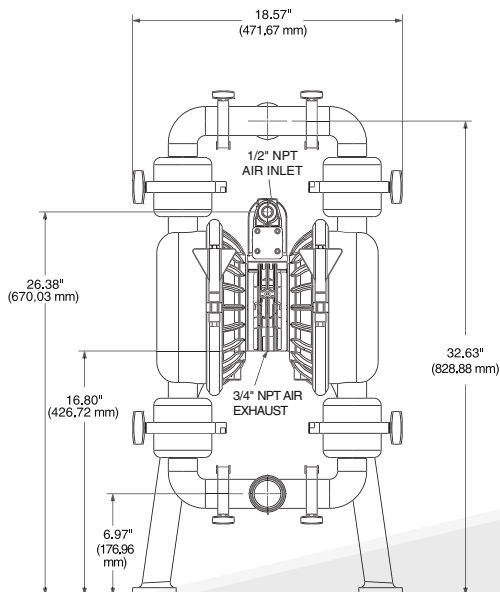
SPSN20SST – 2"



Technical Specifications

Max Flow 147 GPM (556 LPM)
Max Air Supply or Liquid Pressure 100 psig (6,9 bar)
Max Particle Size (Dia.) 5/8" (15,9 mm)
Suction Lift 9' Dry / 27' Wet (2,7 m / 8,2 m)
Temperature Range ... -35° F (-37° C) to 220° F (104° C)
Elastomers PTFE
Center Block SS316
Wetted Section SS316L-Polished to 32 Ra

Port Configuration Center Horizontal
Intake / Discharge Connection 2" Tri-Clamp®
Air Inlet / Exhaust 1/2" NPT / 1" NPT
Noise Level 98 db (A)
Shipping Weight 125 lbs (56.7 kg)
Wet End Kit Part Number 200-130
Air Valve Kit Part Number 200-004



STANDARD
Pump, Inc.
www.standardpump.com