

## Up to 65% more filter area in a compact, easy-to-use filter element

Eaton's HAYFLOW filter elements are suitable for a wide range of applications such as paints, lacquers, inks, dispersing agents, resins, water purifying systems, solvents, lubricants and liquids used in metal processing, detergents containing solvents and water in metal washing installations, drinking water, beer, wine, edible oil and many more.

Eaton combines the benefits of a filter bag with those of a filter cartridge into a new, rugged filter element with optimum filtration performance. The filter area of HAYFLOW filter elements is up to 65% larger compared to a standard filter bag. Extended service life and long intervals between filter change-outs lead to reduced operating costs.

### Features and benefits

- Higher flow rates reduces the size of bag filter housings by up to 50% and lowers the initial costs of the filtration system
- Extended service life is up to five times longer compared to standard filter bags
- Up to 35 times more effective than standard filter cartridges
- Long intervals between filter element change-outs reduces operating costs
- Contains only 25% of residual liquid compared to filter bags of similar size

- Patented SENTINEL® seal ring prevents liquid bypass for safe filtration
- Low differential pressure results in less energy consumption of pumps
- Simple to insert into existing bag filter housings with new HAYFLOW restrainer basket
- Easy element change-out
- Material is free from silicone and crater-forming substances<sup>1</sup>
- Eaton strongly recommends the use of an insertion tool that facilitates the insertion of the filter element into the bag filter housing and ensures the correct alignment of the filter element inside the HAYFLOW restrainer basket

### Filter specifications

#### Materials

POXL, PEXL: Extended-life needle felt polypropylene or polyester  
LCR-128: Melt-blown polypropylene

#### Seal rings

Welded polypropylene or polyester  
SENTINEL seal ring and bottom ring

#### Retention ratings

POXL, PEXL: 1, 5, 10, 25, 50, 100 µm  
LCR-128: 37 µm @ >95% efficiency<sup>2</sup>  
POXL, PEXL: nominal efficiency

### Dimensions/Parameters

#### Size

02: Ø 7 x 28" L (180 x 700 mm)

#### Filter area

02: 7.5 ft<sup>2</sup> (0.7 m<sup>2</sup>)

#### Max. operating temperatures

Polypropylene: 194 °F (90 °C)  
Polyester: 302 °F (150 °C)

#### Max. differential pressure

36.2 psi (2.5 bar)

#### Recommended change-out pressure for disposal<sup>3</sup>

11.6 – 21.7 psi (0.8 – 1.5 bar)

#### Max. flow rates<sup>4</sup>

POXL, PEXL: 02: 176 GPM (40 m<sup>3</sup>/h)  
LCR-128: 02: 110 GPM (25 m<sup>3</sup>/h)

# EATON

Powering Business Worldwide

# HAYFLOW Filter Element Range

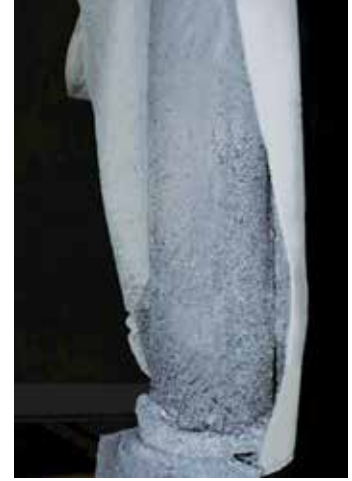
## How the HAYFLOW filter element works



## Internal view of filter element



## Filter element from an e-coat tank filtration after being in service for eleven weeks



## Ordering information

### Ranges/Materials

POXL: Extended-life needle felt polypropylene  
 PEXL: Extended-life needle felt polyester  
 LCR: Melt-blown polypropylene

POXL

-1

-P02HAY

-08L

### Retention ratings

POXL, PEXL: 1, 5, 10, 25, 50, 100 µm  
 LCR-128<sup>1</sup>

### Size

02: Ø 7 x 28" L  
 (180 x 700 mm)

### Packaging

8: Filter elements/box  
 L: Box size

## Easy installation of HAYFLOW filter elements into existing bag filter housings



<sup>1</sup> Based on an accepted paint compatibility test (see document QUC-STA-10).

<sup>2</sup> Reference values based on single pass tests in ambient lab conditions with ISO test dust in water at 44 GPM (10 m<sup>3</sup>/h)/size 02.

<sup>3</sup> Depending on the respective application requirements.

<sup>4</sup> For liquids with a dynamic viscosity of 1 mPa·s @ 68 °F (20 °C).

### North America

44 Apple Street  
 Tinton Falls, NJ 07724  
 Toll Free: 800 656-3344  
 (North America only)  
 Tel: +1 732 212-4700

### China

No. 3, Lane 280,  
 Linhong Road  
 Changning District, 200335  
 Shanghai, P.R. China  
 Tel: +86 21 5200-0099

### Europe/Africa/Middle East

Auf der Heide 2  
 53947 Nettersheim, Germany  
 Tel: +49 2486 809-0

### Singapore

4 Loyang Lane #04-01/02  
 Singapore 508914  
 Tel: +65 6825-1668

Friedensstraße 41  
 68804 Altlußheim, Germany  
 Tel: +49 6205 2094-0

### Brazil

Rua Clark, 2061 - Macuco  
 13279-400 - Valinhos, Brazil  
 Tel: +55 11 3616-8400

An den Nahewiesen 24  
 55450 Langenlonsheim, Germany  
 Tel: +49 6704 204-0

For more information, please email us at [filtration@eaton.com](mailto:filtration@eaton.com) or visit [www.eaton.com/filtration](http://www.eaton.com/filtration)

© 2017 Eaton. All rights reserved. All trademarks and registered trademarks are the property of their respective owners. All information and recommendations appearing in this brochure concerning the use of products described herein are based on tests believed to be reliable. However, it is the user's responsibility to determine the suitability for his own use of such products. Since the actual use by others is beyond our control, no guarantee, expressed or implied, is made by Eaton as to the effects of such use or the results to be obtained. Eaton assumes no liability arising out of the use by others of such products. Nor is the information herein to be construed as absolutely complete, since additional information may be necessary or desirable when particular or exceptional conditions or circumstances exist or because of applicable laws or government regulations.

US  
 EF-FTB-12  
 07-2017



Powering Business Worldwide

