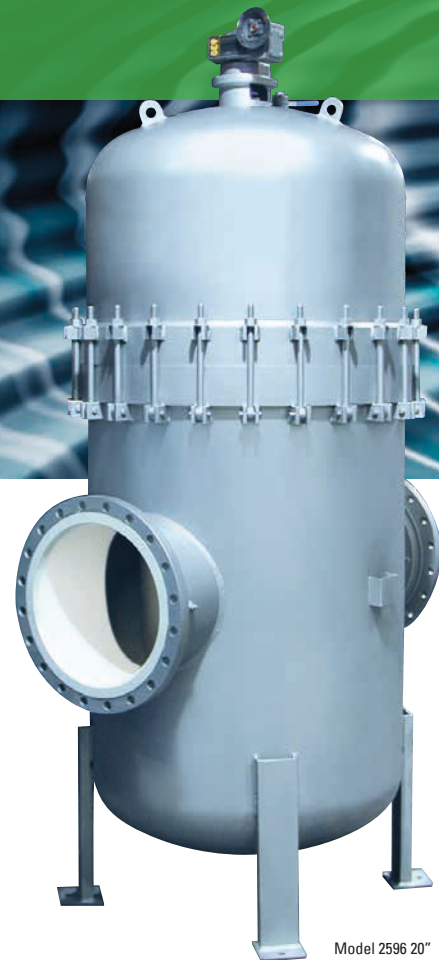


Automatic Self-Cleaning Strainers

2596 10"-48"



Eaton's Model 2596 Fabricated Automatic Self-Cleaning Pipeline Strainers are available in 10", 12", 14", 16", 18", 20", 24", 30", 36", 48", and special sizes upon request. Continuous flow, simplified maintenance, and worry-free operation characterize the Model 2596 across numerous industries.



Model 2596 20"

FEATURES / BENEFITS

- Flow rates up to 35,000 gpm (7949 m³/hr)
- A broad selection of screen options
- Automatic backwashing for operator-free service and minimal backwash effluent
- Exclusive idL™ Seal for leak free service, available up to 24" only
- Unitized modular assembly for easy maintenance
- Fabricated carbon steel construction

OPTIONS

- Various grades of stainless steel, copper nickel, monel, and other exotic materials of construction
- ASME Section VIII, Div. 1. code stamp available.
- Flanged, screwed, or socket weld backwash connections
- Internal and external epoxy paint or other coatings, upon request, on all carbon steel components for fresh water service applications
- Custom designs are available upon request

The Eaton Model 2596 Automatic Self-Cleaning Strainer is designed for the continuous removal of entrained solids from liquids in pipeline systems.

With an automated control system monitoring the strainer operation, cleaning is accomplished by an integral backwash system. A small portion of the screen element is isolated and cleaned by reverse flow while the remaining screen area continues to strain—providing uninterrupted flow. This efficient design uses only a small amount of the liquid being strained to carry debris away from the strainer element.

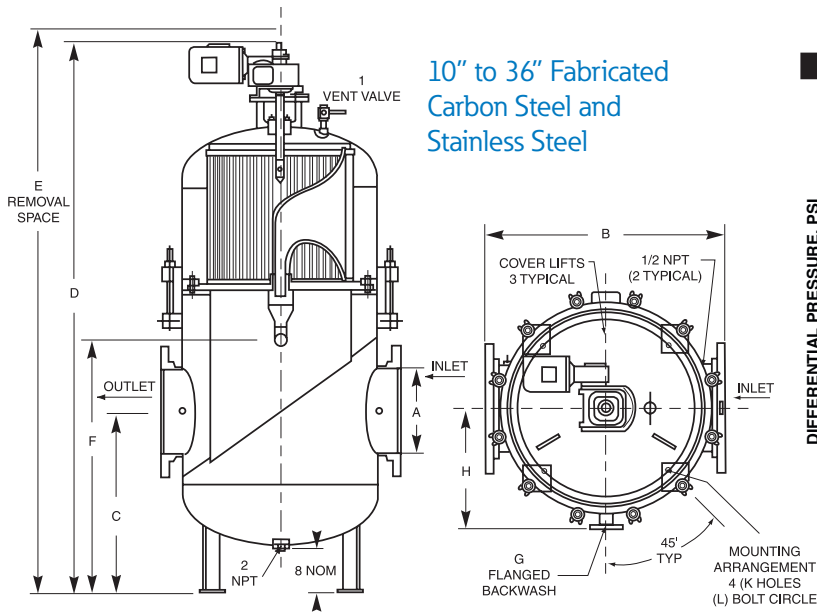
The Model 2596 features the idL™ shaft seal that positively prevents leakage from the backwash shaft at the top of the strainer. This unique quad seal keeps the exterior of the strainer dry and prevents external leakage or weeping of the process media down the sides of the strainer.

To simplify maintenance the Model 2596 features a unitized modular assembly. The motor, gear reducer, and the internal operating mechanism are housed within the strainer cover and lift off as a unit. This makes all components easily accessible and reduces associated maintenance costs.

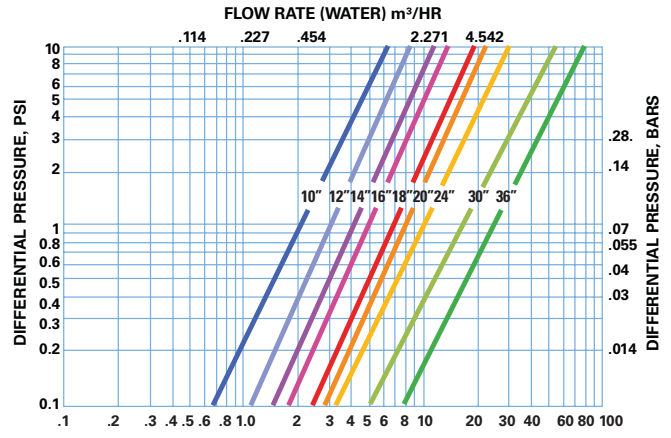
EATON

Powering Business Worldwide

Model 2596 10" to 48" Fabricated Automatic Self-Cleaning Strainers



Model 2596 10" - 36" Flow Rates



Pressure drop data indicates results to be expected with clean water, under normal flows with standard straining media and in clean strainer.

Dimensions are for reference only. For installation purposes, request certified drawings.

Note:

K= Diameter Bolt Hole (4) Required 90° Apart

L= Diameter Bolt Circle

Approximate Dimensions (in)												Approximate Weight (lb)		
	A	B	C	D	E	F	G	H	K	L	Dry	Wet	Cover	
10"	38	30	88	90	40	2	16	3/4	22	13/100	1,200	2,400	650	
12"	42	30	88	90	40	2	18	3/4	26	13/100	1,300	2,700	700	
14"	44	32	101	103	46	2	22	7/8	32	13/100	2,000	4,400	850	
16"	44	33	101	103	46	2	22	7/8	32	13/100	2,050	4,450	850	
18"	50	36	117	120	48	3	23	7/8	34	13/100	3,500	8,300	1,280	
20"	54	37	120	123	50	3	25	7/8	38	13/100	3,700	10,000	1,480	
24"	54	39	124	127	54	3	25	7/8	38	13/100	3,830	10,160	1,480	
30"	64	51	147	151	76	3	30	7/8	48	13/100	5,000	13,400	2,000	
36"	84	56	176	182	72	6	37	1 1/8	66		9360	24,735	4,520	

48" and special sizes can be fabricated upon request, consult Eaton.

Sizes 10" Thru 48"

Application Limits

- Fabricated strainers are designed within the limits of the customer's specifications and design criteria along with any applicable code requirement, i.e. ASME Section VIII Div. 1.

Specific descriptions and construction details illustrated may vary slightly from equipment furnished. We reserve the right to revise or discontinue equipment or design features without notice. We recommend that you review performance and application data with us prior to final design.

North America
44 Apple Street
Tinton Falls, NJ 07724
Toll Free: 800 656-3344
(North America only)
Tel: +1 732 212-4700

China
No. 3, Lane 280,
Linhong Road
Changning District, 200335
Shanghai, P.R. China
Tel: +86 21 5200-0099

Europe/Africa/Middle East
Auf der Heide 2
53947 Nettersheim, Germany
Tel: +49 2486 809-0

Singapore
100G Pasir Panjang Road #07-08
Singapore 118523
Tel: +65 6825-1668

Friedensstraße 41
68804 Altludersheim, Germany
Tel: +49 6205 2094-0
An den Nahewiesen 24
55450 Langenlonsheim, Germany
Tel: +49 6704 204-0

Brazil
Av. Ermanno Marchetti, 1435 -
Água Branca, São Paulo - SP,
05038-001, Brasil
Tel: +55 11 3616-8461