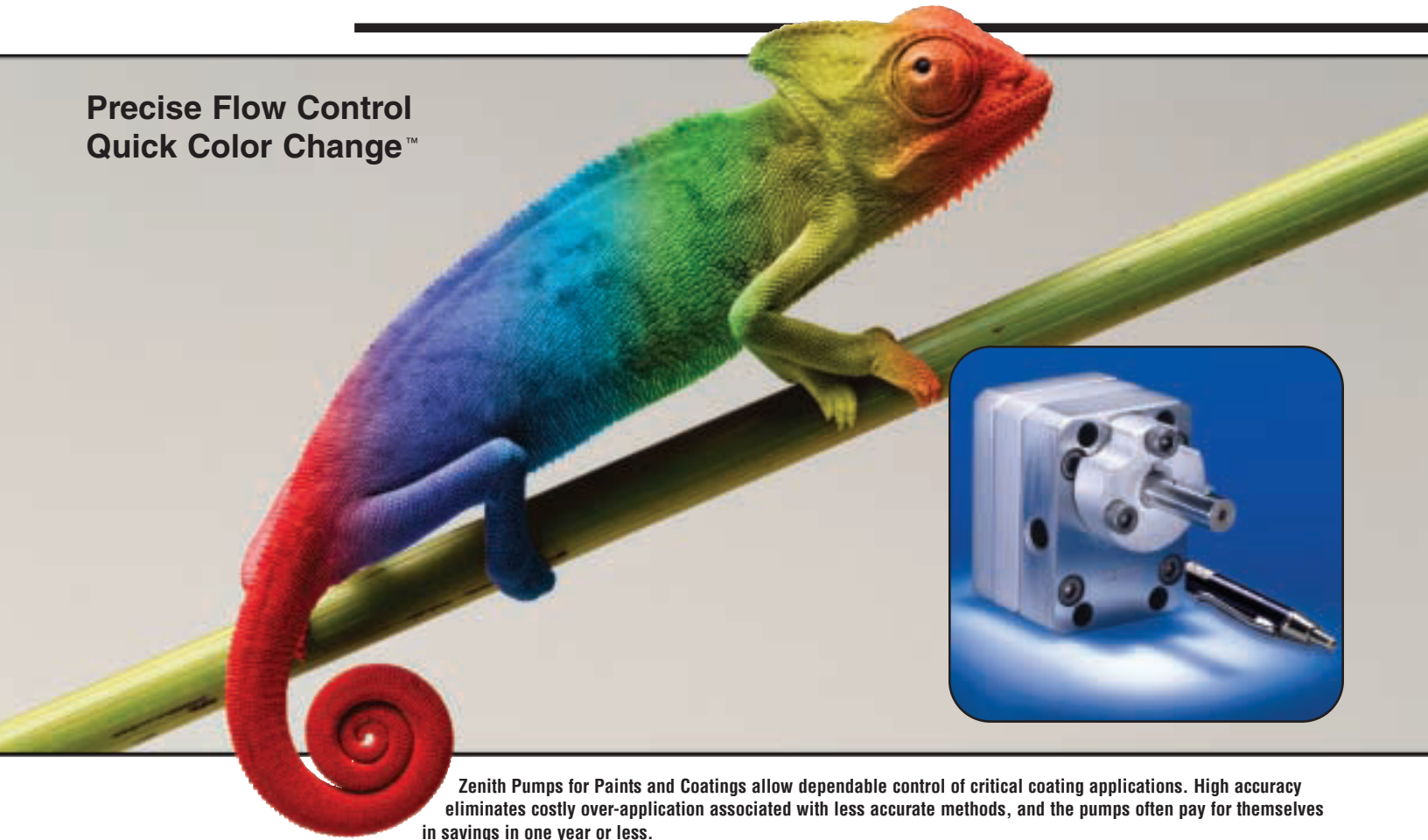


Zenith® Pumps

Chameleon Pump Technology™

For Paints and Coatings

Precise Flow Control
Quick Color Change™



Zenith Pumps for Paints and Coatings allow dependable control of critical coating applications. High accuracy eliminates costly over-application associated with less accurate methods, and the pumps often pay for themselves in savings in one year or less.

Benefits and Features

- **Flushable** - change colors in seconds - Chameleon design features allow quick and effective flushing, in-line, resulting in rapid changeover of paint colors and types.
- **Leak Free** - triple lip-seal design provides redundant sealing and leak-free performance without the maintenance issues of packings or the complication of face seals.
- **Long Life** - components made from high-carbide steels, through hardened for wear resistance and strength.
- **Pulseless** - rotary spur gears provide smooth, continuous flow without the trouble and expense of check valves, accumulators and complex hydraulic circuitry.
- **Active Flowmeter** - closed-loop speed control of precise components ensures accurate flow control without adding a secondary flowmeter.
- **High Pressure** - manufacturing tolerances of +/- .00005" (1.25 micron) allow clearances to be kept to a minimum, and high process pressures to be achieved.

- **Compact** - 2.5" x 1.9" and weight of 2 lb. (3cc) or 2.5 lb. (6cc) - full-size features compressed into a small, lightweight package.
- **Accurate** - stable, repeatable flow control despite process variations due to temperature, viscosity and pressure.

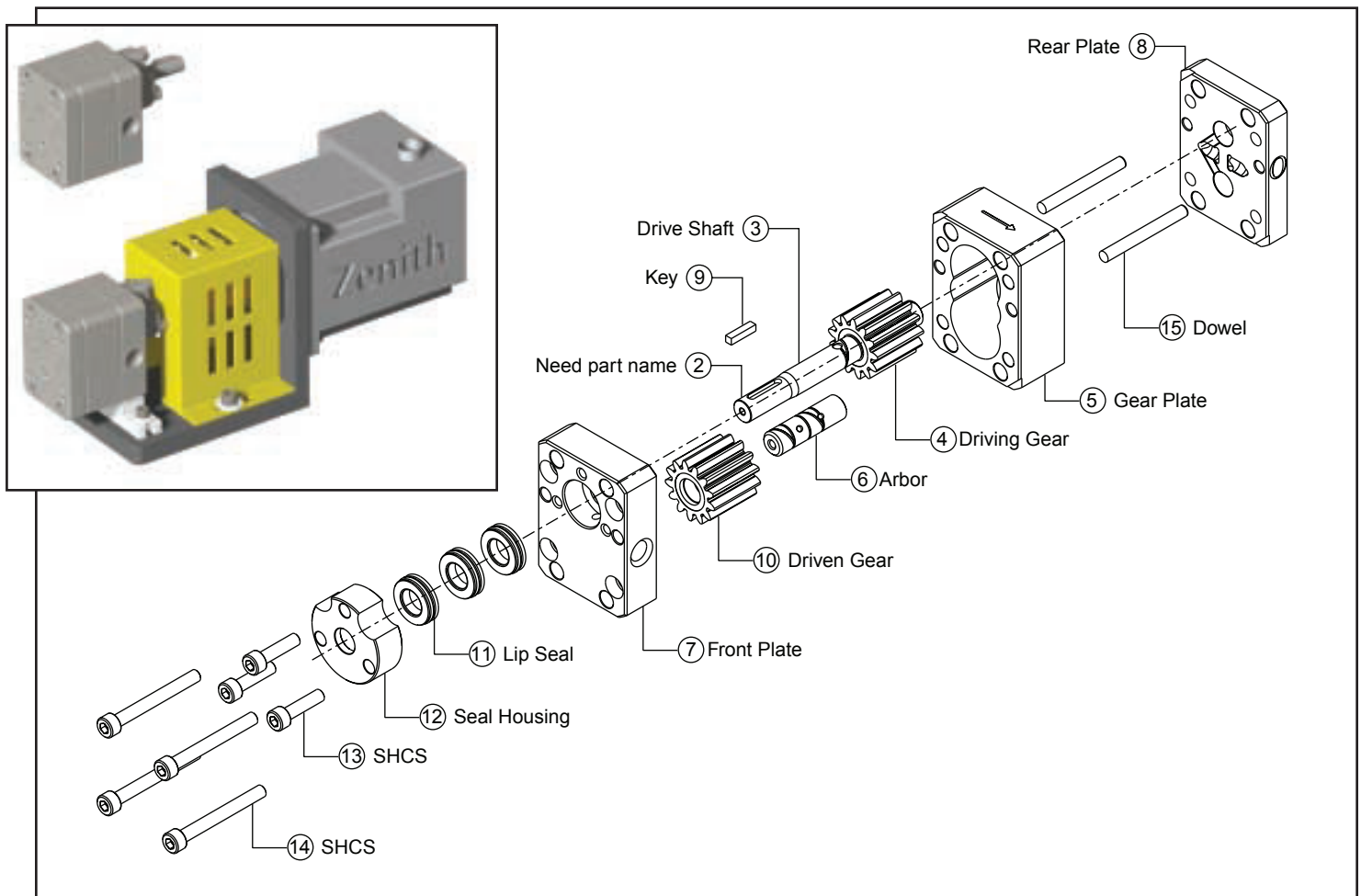
Applications

Zenith Pumps for Paints and Coatings are designed to provide stable, precise, repeatable flow control of coating fluids, despite variations in temperature, viscosity, and pressure. Zenith Pumps for Paints and Coatings are broadly applied to services such as resins, catalysts, colorings, binders, adhesives, coatings, inhibitors, solvent and water-based paints, clear-coats, varnishes and dyes. Zenith Pumps for Paints and Coatings offer quick, effective, in-process flushing for applications requiring frequent color changes or where flow stagnation is a concern.



Specifications

- **Rotation:** Clockwise and Counter (Contra) Clockwise available
- **Capacities:** 3.0 cc/rev, 6.0 cc/rev
- **Flow Rate:** 30 – 1800 cc/min, 0.03 – 1.8 liters/min
- **Accuracy:** +/- 1% of full range set speed, balanced pressure
- **Repeatability:** +/- 0.1% of setpoint (control dependent)
- **Temperature Limit:** 300°F, 150°C
- **Recommended Speed Range:** 10 – 300 RPM
- **Inlet Pressure Range:** 0 – 300 psi, 0 – 20 bar
- **Discharge Pressure Range:** 0 – 1000 psi, 0 – 69 bar
- **Viscosity Range:** 1 – 100,000 cp
- **Inlet/Outlet Port Connections:** 1/8-27 NPT, 1/8 BSPP, or rear porting
- **Materials of Construction:** 400 series stainless steel standard; High-vanadium Stainless and Diamond-like Coatings available.
- **Seals:** 3PTFE™ – Triple Lip seal, with fluorocarbon elastomers



Zenith® Pumps

1710 Airport Road
Monroe, NC 28110

Ph: 704-289-6511 • Fax: 704-289-9273

zenithpumps@colfaxcorp.com • zenithpumps.com

