

TYPE LF/LC/LCV
END SUCTION PUMPS
Close Coupled and Frame Mounted



END SUCTION PUMPS

Type LF (Frame Mounted)

Type LC (Close Coupled)

Type LCV (Vertically Mounted Close Coupled)

Grundfos CBS Inc. is fully committed to advancing pump technology and providing its customers with the most efficient pumps in the market.

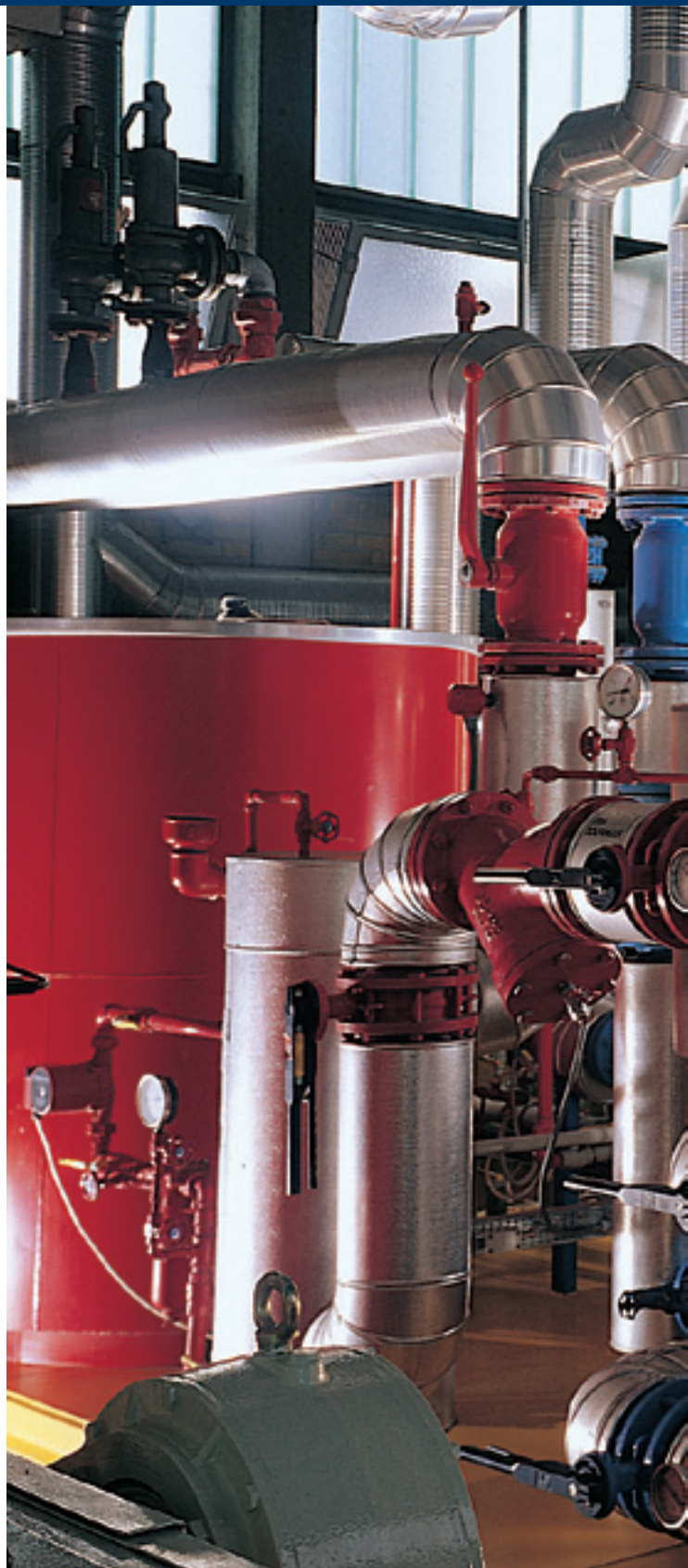
The PACO line of end suction, single stage pumps serves as the industry standard in performance, quality, and durability. With an expanded selection of 32 sizes available, the PACO line of pumps are the smart choice for a number of reasons:

- › Low life-cycle costs
- › High efficiency for reduced operation costs
- › Compensated double-volute design for reduced radial loads, minimized shaft deflection, and prolonged seal life and bearing life
- › Mechanical design for reduced maintenance and minimal downtime
- › Back pull out design for ease of maintenance and servicing
- › Range of sizes to meet precise application requirements
- › Quiet operation

Advanced features incorporated as standard on PACO end suction pumps ensure optimum performance and reliability. These features, as well as optional features that meet specialized needs, are available on the broadest line of high-efficiency pumps offered to the industry.

An innovative pump and impeller design produces a higher operating efficiency – up to 91 percent – and provides a wider band of best operating efficiency, even during conditions of off-design operation.

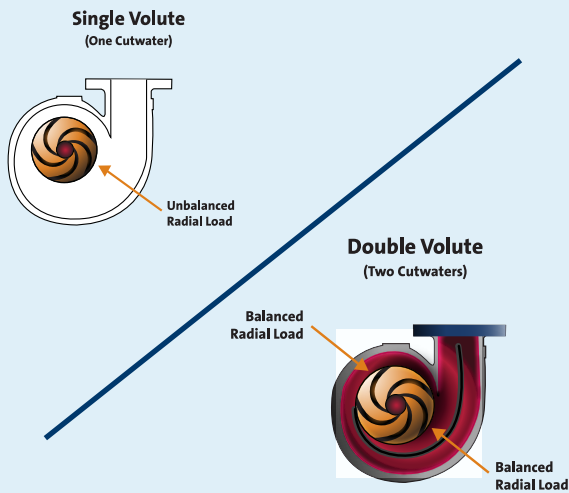
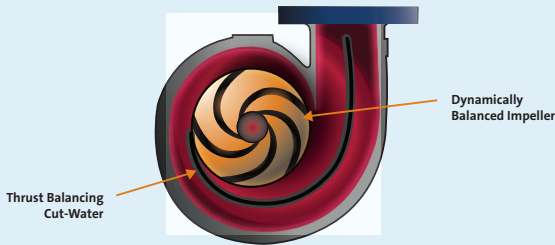
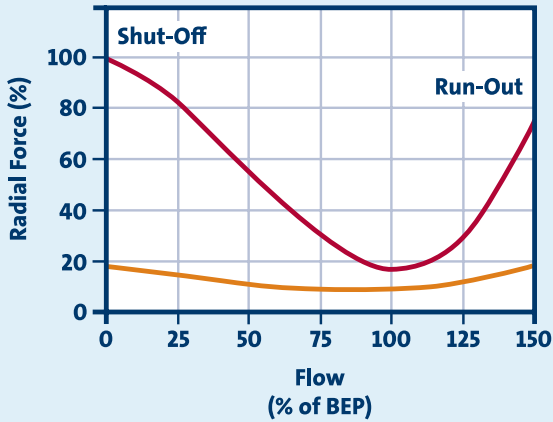
Quite simply, the PACO line of pumps is the smart choice for lower initial cost, longer pump life, reduced operating and maintenance costs, maximum reliability, and quieter operation.



COMPARISON CHART

Typical radial force vs. design capacity with single and double volute

SINGLE VOLUTE **DOUBLE VOLUTE**



LF/LC/LCV

Double Volute Design with Superior Advantages

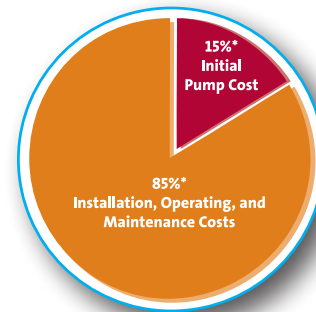
The PACO LF and LC pumps utilize a double volute design that offers a distinct advantage over single volute designs. The double volute design incorporates two cutwaters located at 180°, which divide the flow into two geometrically similar regions of the volute.

The resultant hydraulic forces within the pumps are equal and opposed. As a result, the net radial force is maintained at a very low level throughout the operating range of the pump, and shaft deflection is kept to a minimum.

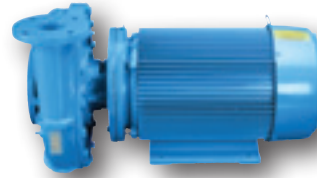
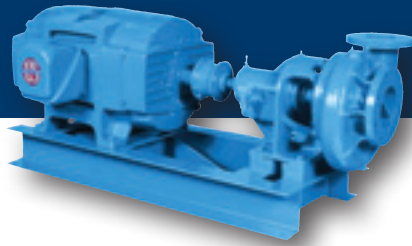
A typical single volute pump is normally designed to operate at or near the best efficiency point (BEP). In actual application, many pumps stray away from BEP due to load variances and/or changes in the system head curve.

As single volute pumps begin to operate away from BEP, the resultant radial load increases dramatically, causing increased shaft loads, deflection, and vibration. Excessive radial loads can cause premature failure of the mechanical seal, bearings, and shaft.

A double volute design ensures that hydraulic radial loads are equal and opposed and thereby nullified. Pump operation remains stable throughout the entire performance curve, with minimal shaft deflection, prolonging seal, bearing, and shaft life.



*According to studies by the U.S. Department of Energy

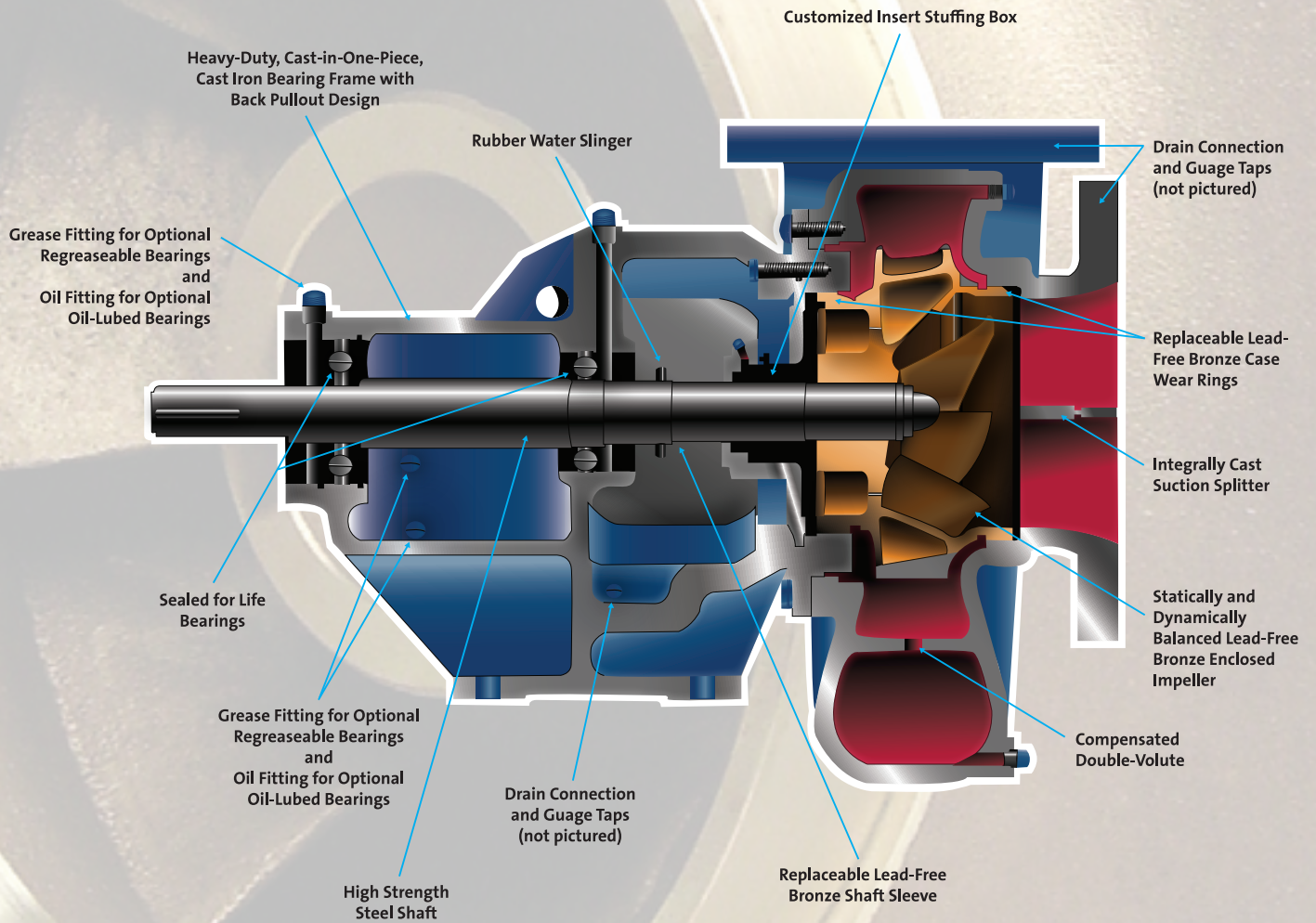


FEATURES AND BENEFITS

PACO LF FRAME MOUNTED END SUCTION PUMP	
Footed Bearing Frame	<ul style="list-style-type: none"> Enhances ease of maintenance and provides proper support of rotating equipment during servicing
Footless Volute	<ul style="list-style-type: none"> Establishes single point support for reducing alignment restrictions, which extend seal and bearing life Permits discharge orientation flexibility Minimizes the effects (misalignment, flange strain) of thermal expansion on volute
Permanently Sealed for Life Bearings	<ul style="list-style-type: none"> Reduce environmental contaminants and pump maintenance
Machined Mounting Surfaces and Fabricated Base Plate	<ul style="list-style-type: none"> Aid in alignment
Choice of Motor Enclosures	<ul style="list-style-type: none"> Increases flexibility of design
Back Pull-Out Design	<ul style="list-style-type: none"> Enables maintenance without disturbing piping
Double Volute Design	<ul style="list-style-type: none"> Reduces radial loads, internal recirculation, and turbulence, which increases efficiency, lowers life cycle costs, and prolongs seal and bearing life
Large Seal Chamber	<ul style="list-style-type: none"> Allows for various seal configurations and customization
Integrally Cast Diffuser Vane	<ul style="list-style-type: none"> Reduces turbulence and pre-rotation by providing laminar flow into oversized impeller eye, resulting in decreased need for extended horizontal suction pipe runs, elbows, or suction guides
Francis Vane Impeller Design	<ul style="list-style-type: none"> Increases efficiency and reduces NPSHr
Bronze Case Wear Rings	<ul style="list-style-type: none"> Extend pump life and increase pump efficiency (included as standard) Provide simple and inexpensive renewal of "like new" operating tolerances, even after years of operation
Impellers	<ul style="list-style-type: none"> Trimmed to exact customer specifications for customization Static and dynamically balanced to ISO 1940-G3 for reduced noise and vibration Hydraulically balanced to decrease thrust loads and prolong seal and bearing life
PACO LC/LCV CLOSE COUPLED END SUCTION PUMPS	
Close Coupled Design	<ul style="list-style-type: none"> Provides compact construction and space savings
Registered Fit	<ul style="list-style-type: none"> Eliminates machine tolerance stacking Provides positive placement of components for permanent rigid pump to motor alignment
Permanent Rigid Alignment	<ul style="list-style-type: none"> Eliminates need for alignment Prolongs seal and bearing life
Industry-Standard JM Frame Motor	<ul style="list-style-type: none"> Simplifies motor replacement
Type LCV Pump	<ul style="list-style-type: none"> Offers vertical mounting of close coupled design for increased space savings
No Grouting Requirements	<ul style="list-style-type: none"> Makes installation easy
Francis Vane Impeller Design	<ul style="list-style-type: none"> Increases efficiency and reduces NPSHr
Impellers	<ul style="list-style-type: none"> Trimmed to exact customer specifications for customization Static and dynamically balanced to ISO 1940-G3 for reduced noise and vibration Hydraulically balanced to decrease thrust loads and prolong seal and bearing life

THE INDUSTRY STANDARD FOR PREMIUM PUMPS

Performance you can count on. Quality you can expect. Reliability you can trust.



LF/LC/LCV

End Suction Pumps

Technical Data

Flow, Q: max 6,000 gpm
 Head, H: max 400 feet
 Fluid temp.: max 275° F
 HP range: 1/3 to 300 hp
 Discharge sizes: 1" to 10"

Applications

- HVAC
- Plumbing
- Industrial
- Wastewater

Standard Features

- Lead-free bronze construction
- Dynamically balanced enclosed-type impellers
- Mechanical seal or packed box
- Suction and discharge pressure gauge taps
- Full-flanged connections on discharges 2-1/2" and larger
- Internal case suction splitter
- Low NPSH requirements
- Wear rings
- Rigid designed steel base with machined pump and motor mounting surfaces

Optional Features

- Materials of construction
- Alloy shafts and sleeves
- Seal materials and configurations
- Motor enclosures (TEFC or explosion-proof)

Certifications

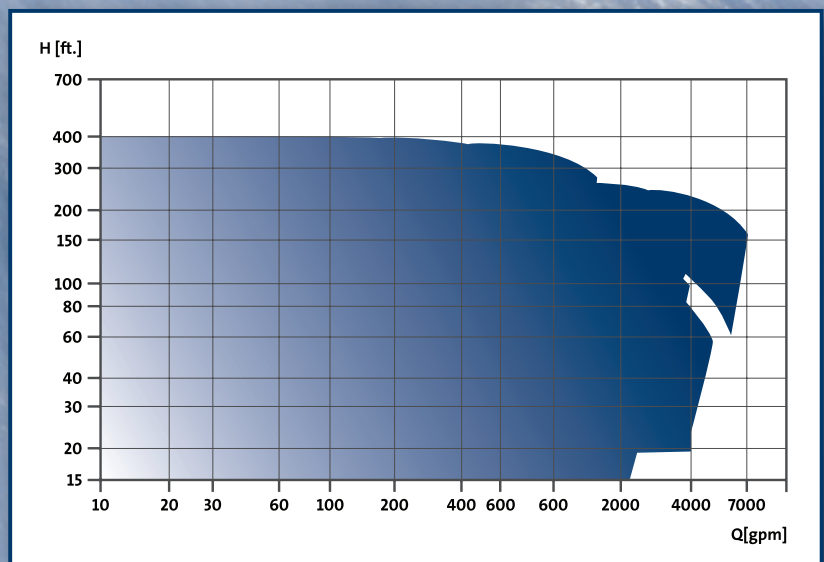
- ISO 9001 Certified
- ANSI/NSF-50 Standard Certified available
- ANSI/NSF-61 Standard Certified available

	CASE WORKING PRESSURE	ANSI FLANGE
Standard	175 psi	125 lb.
Optional	350 psi*	250 lb.

* Some models available, RTF

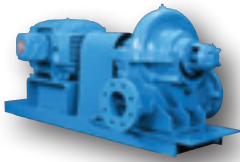
CONSTRUCTION FEATURES			
FEATURE	LC(V)	LF	MATERIAL(S)
Volute	•	•	Cast Iron - ASTM A48, CL 30
Impeller	•	•	Bronze - I836, C89833
Case Wear Rings	•	•	Bronze - NiAl Bronze, ASTM B148, C95400
Backplate	•	•	Cast Iron - ASTM A48, CL 30
Motor Shaft	•	•	Carbon Steel
Pump Shaft	•	•	AISI 1045, 303, 304, 316
Shaft Sleeve	•	•	I836, C89833
Coupling	N/A	•	Flex Coupling
Coupling Guard	•	•	ANSI/OSHA Compliant
Packing	•	•	Braided Synthetic, Graphite
Mechanical Seal	•	•	Conventional, Cartridge, Single, Double
Stand	•	•	Cast Iron, Fabricated Carbon Steel

LF/LC/LCV Performance Range



WE HAVE YOU COVERED

Grundfos offers a full line of PACO brand products to cover all your pumping needs. Visit www.pacopumps.com for information about all of our pumps plus an online selection tool, life cycle cost calculations, technical data, and CAD drawings.



PACO KP Split Case Pump



PACO KPV Vertically Mounted Split Case Pump



PACO VL Vertical Inline Pump



PACO VSM/VSMS Vertical Space Miser Pump



PACOFlo 9000 Booster System



PACO QDSC Submersible Pump



PACO GR Condensate Return Pump



PACO NCP Dry-Pit Non-Clog Pump

PARTS & SERVICE

Grundfos is committed to excellence in after-sales service. Genuine PACO parts are pre-engineered and pre-packaged to simplify selection, ordering, and stocking. Virtually all required parts for PACO products are available as kits.



USA

GRUNDFOS Pumps Corporation
17100 West 118th Terrace
Olathe, Kansas 66061
Phone: (913) 227-3400
Telefax: (913) 227-3500

USA

Grundfos CBS Inc. – PACO Pumps
902 Koomey Road
Brookshire, TX 77423
Phone: (800) 955-5847
Telefax: (800) 945-4777

CANADA

GRUNDFOS Canada Inc.
2941 Brighton Road
Oakville, Ontario
L6H 6C9
Phone: (905) 829-9533
Telefax: (905) 829-9512

MEXICO

Bombas GRUNDFOS de Mexico S.A. de C.V.
Boulevard TLC No. 15
Parque Industrial Stiva Aeropuerto
C.P. 66600 Apodaca, N.L. Mexico
Phone: 011-52-81-8144 4000
Telefax: 011-52-81-8144 4010



L-PP-SL-003 • 06/09 (US)

The name Grundfos, the Grundfos logo, and the payoff Be–Think–Innovate are registered trademarks owned by Grundfos Management A/S or Grundfos A/S, Denmark. All rights reserved worldwide.

